



Alderney Road, London, E1

BUTLER & STAG



Guide Price £475,000 - £500,000
Nestled within the picturesque confines of the esteemed Carlton Square Conservation Area, this exquisite one-bedroom conversion effortlessly blends period charm with modern convenience. Situated in one of the most sought-after locales in the heart of East London, this garden flat offers an unparalleled opportunity to immerse yourself in the rich heritage of the city while enjoying contemporary comforts.



Share of Freehold

- Duplex Victorian Conversion
- South Facing Garden
- Sash Windows
- One Bedroom
- Carlton Square Conservation Area
- Share Of Freehold
- Solid Parquet Floors
- Granite Worktops
- Bay Window
- Underfloor Heating In The Kitchen

Upon entering, you are greeted by a welcoming ambiance that resonates throughout the residence. The meticulously preserved Victorian architecture, characterized by high ceilings, exposed brick fire place and large sash windows, infuses each room with an air of timeless elegance.

The generously sized living area serves as the focal point of the home, boasting ample space for both relaxation and entertainment. Bathed in natural light streaming through the grand windows, this space is perfect for unwinding after a long day or hosting intimate gatherings with friends and family.

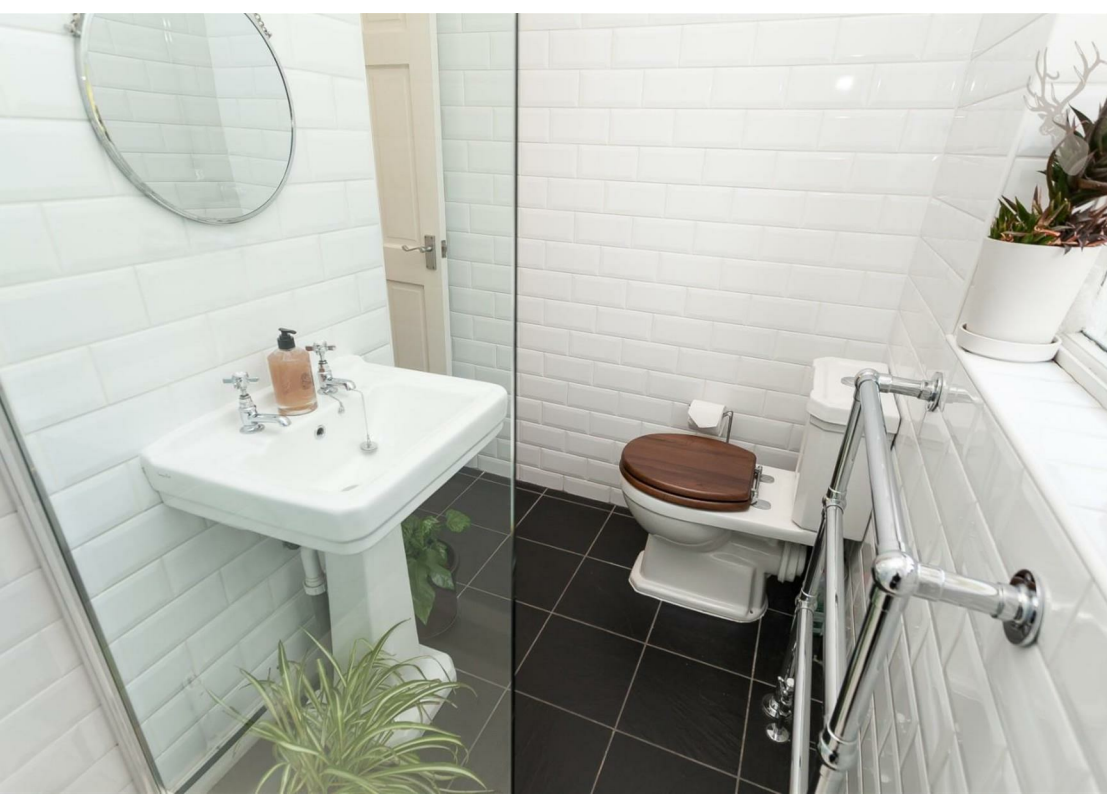
Adjacent to the living area, the well-appointed kitchen offers a seamless fusion of style and functionality. Featuring modern appliances, shaker style cabinetry, and ample counter space, it provides the ideal setting for culinary endeavours.

The bedroom provides a peaceful retreat from the hustle and bustle of city life. With its herringbone lay solid wood flooring, soft lighting, and serene ambiance, it offers the perfect environment for rest and rejuvenation.

Completing the residence is a luxurious bathroom, outfitted with premium fixtures and finishes, where you can indulge in a spa-like experience within the confines of your own home.

Stepping outside, you are greeted by the charming streetscape of Carlton Square, where rows of Victorian townhouses adorned with colourful facades line the sidewalks. The meticulously maintained communal gardens offer a serene oasis amidst the urban landscape, providing residents with a tranquil space to relax and unwind.



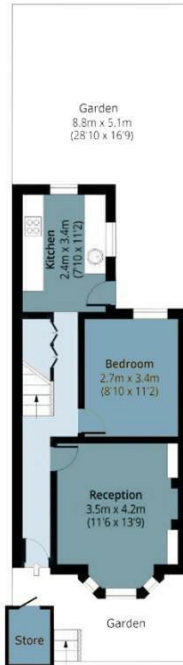


Alderney Road, Stepney, E1

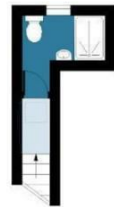
Approx. Gross Internal Area 47.72 Sq M (527 Sq Ft)

BUTLER & STAG

Lower Ground Floor
Approx. 41.56 Sq. meters (447 Sq. feet)



Upper Ground Floor
Approx. 6.16 Sq. meters (66 Sq. feet)



Measurements are approximate and for illustration purposes only. While we do not doubt the accuracy and completeness, we advise you conduct a careful independent assessment of the property to determine monetary value.
© @modephotouk www.modephoto.co.uk

BUTLER & STAG

☎ 020 8102 1236

🏠 508 Roman Road, Bow, London, E3 5LU

✉ bow@butlerandstag.com

IMPORTANT NOTICE - These particulars have been prepared in good faith and they are not intended to constitute part of an offer or contract. We have not performed a structural survey on this property and the services, appliances and specific fittings have not been tested. All photographs, measurements, floor plans and distances referred to are given as a guide and should not be relied upon.

www.butlerandstag.uk